

Programmable Logic Controller

MICRO**Smart** FC6A

IoT for smart & efficient production

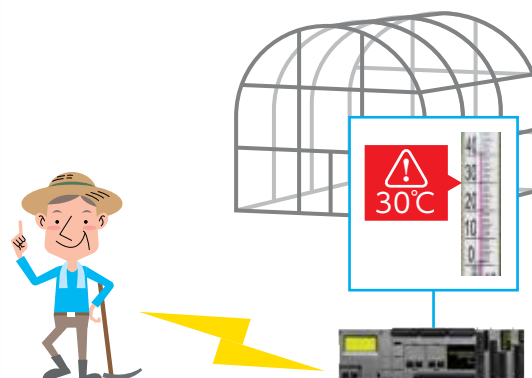
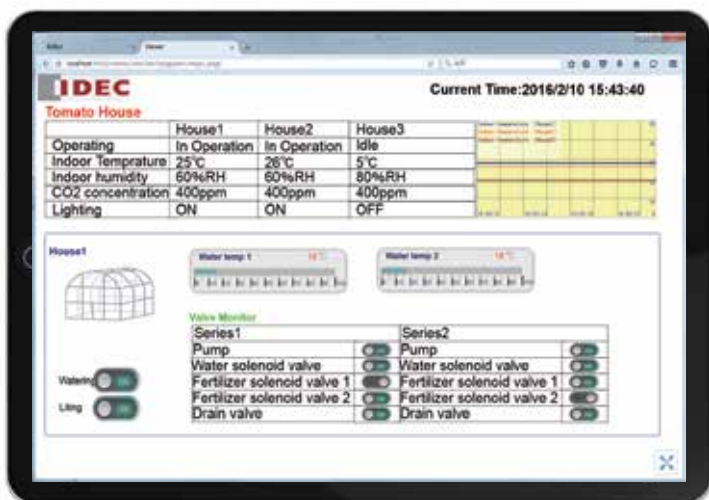
New addition to WindLDR: Web page editor function



Devices and systems can be monitored remotely in real time. secure systems. Three choices to edit your monitor screen.

1 Create your original user web page using the Web Page Editor fuction

NEW



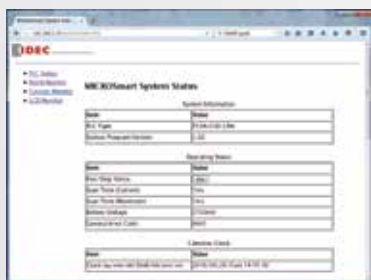
Monitor screens can be designed flexibly by showing allocated data registers and stored values with images and graphs, so that users have easy access to the required information.

2 Eliminate the need to create web pages using System Web Page

The system web pages below embedded in the FC6A eliminate the need to create a status monitor page, allowing you to use the web pages right away.

- PLC status** Status of FC6A such as system software version or scan time can be confirmed. Run/stop operation can be controlled and status monitored.
- Batch monitor** Consecutive data registers can be monitored. Parameter change is also possible.
- Custom monitor** Data registers for monitoring can be specified for monitoring and control. Also possible to select data type.
- LCD monitor** The same content shown on the LCD is displayed, as if you are using the PLC at your fingertips.

PLC status



Batch/Custom monitor



LCD monitor



3 Create web pages for professional use using HTML editor and Java script to differentiate with the others

Design and create your original screens using HTML editor and Java Script that best fits the needs of your application.

Fully-customized user web pages can be imported from WindLDR to the FC6A. (Web pages used with FC5A-D12 can be utilized.)

	Application	Applicable OS	Applicable Browser & Software
Development	1 Creating customized, easy-to-see user web pages	WindowsOS	Google Chrome 47 and later, Mozilla Firefox 42 and later, Microsoft Internet Explorer 11
	2 Pre-setting system web pages	WindLDR settings only	
	3 Creating user web pages for pro-use using HTML editor and Java Script	Can use HTML files created with any web page design software or text editor.	
Operation	Remote monitoring/control	WindowsOS	Google Chrome 47 and later, Mozilla Firefox 42 and later , Microsoft Internet Explorer 11
		Android	Google Chrome 47 and later
		iOS	Safari 8 and later

Passwords can be set on the web pages enabling design of

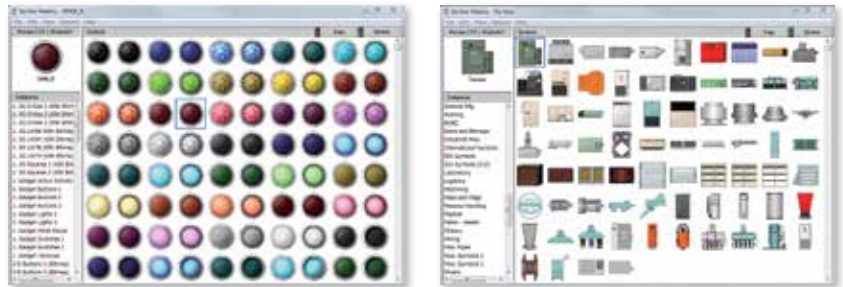
Web Page Editor—New function to WindLDR ! *

No special knowledge of HTML editor or Java Script needed, reducing development time.

Easy edit and configuration on PC

[Components]

Built-in symbol library providing over 7000 symbols and image data can be imported to create cutting-edge graphical screens. Small-size video files can also be used.



[Java Script]

Complicated graph or status images of meters can be shown by adding the programs using Java Script.

```

w = 0;
if (i < len) {
  w += parseInt(str.charCodeAt(i), 10) * 256;
  i++;
}
if (i < len) {
  w += parseInt(str.charCodeAt(i), 10);
  i++;
}
vReg = "IDEC." + D + " " + D + (DStart + i) + " Word";
$setVar(vReg, true);
$setVar(vReg, w);
    
```

[Property]

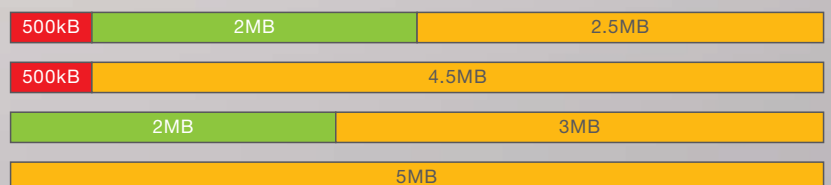
Detailed settings such as allocating data register to the selected symbols can be configured.

* WindLDR V8.20 or later is required to use Web Page Editor

Web page capacity/ capacity allocation examples

- [System web page]
Web page stored in the FC6A
- [System software for Web Page Editor]
Capacity needed to use Web Page Editor
- [User web page]
Capacity of web pages a user can create.

Up to 5MB is available for configuring web pages according to applications.



Send E-mail function enables easy system configuration of periodic report and event reporting.

Up to 255 email messages (subject: 255 byte max., body message: 4,096 byte max.) can be configured. Data register in CSV file of up to 4,096 byte can be attached to an email. Destination address change function using data register is also available, enabling to configure the system best suited to the application.



More information available on FC6A brochure and datasheet

Brochure



Cat No. EP1574

Datasheet



Cat No. EP1575

Specifications and other descriptions in this brochure are subject to change without notice.



IDEC CORPORATION

6-64, Nishi-Miyahara 2-Chome, Yodogawa-ku, Osaka 532-0004, Japan
Tel: +81-6-6398-2527, Fax: +81-6-6398-2547
E-mail: marketing@idec.co.jp

IDEC CORPORATION (USA)
1175 Elko Drive, Sunnyvale, CA 94089-2209, USA
Tel: +1-408-747-0550 / (800) 262-IDEC (4332)
Fax: +1-408-744-9055 / (800) 635-6246
E-mail: opencontact@idec.com

IDEC CANADA LIMITED
3155 Pepper Mill Court, Unit 4
Mississauga, Ontario, L5L 4X7, Canada
Tel: +1-905-890-8561, Toll Free: (888) 317-IDEC (4332)
Fax: +1-905-890-8562
E-mail: sales@ca.idec.com

IDEC AUSTRALIA PTY. LTD.
Unit 17, 104 Ferntree Gully Road,
Oakleigh, Victoria 3166, Australia
Tel: +61-3-8523-5900, Toll Free: 1800-68-4332
Fax: +61-3-8523-5999
E-mail: sales@au.idec.com

IDEC ELEKTROTECHNIK GmbH
Heselsruecken 8, 22453 Hamburg, Germany
Tel: +49-40-25 30 54 - 0, Fax: +49-40-25 30 54 - 24
E-mail: service@eu.idec.com

IDEC (SHANGHAI) CORPORATION
Room 701-702 Chong Hing Finance Center,
No. 288 Nanjing Road West, Shanghai 200003, PRC
Tel: +86-21-6135-1515
Fax: +86-21-6135-6225 / +86-21-6135-6226
E-mail: idecS@cn.idec.com

IDEC (BEIJING) CORPORATION
Room 211B, Tower B, The Grand Pacific Building,
8A Guanghua Road, Chaoyang District,
Beijing 100026, PRC
Tel: +86-10-6581-6131, Fax: +86-10-6581-5119

IDEC (SHENZHEN) CORPORATION
Unit AB-3B2, Tian Xiang Building, Tian'an Cyber Park,
Fu Tian District, Shenzhen, Guang Dong 518040, PRC
Tel: +86-755-8356-2977, Fax: +86-755-8356-2944

IDEC IZUMI (H.K.) CO., LTD.
Unit G & H, 26/F, MG Tower, No. 133 Hoi Bun Road,
Kwun Tong, Kowloon, Hong Kong
Tel: +852-2803-8989, Fax: +852-2565-0171
E-mail: info@hk.idec.com

IDEC TAIWAN CORPORATION
8F-1, No. 79, Hsin Tai Wu Road, Sec. 1,
Hsi-Chih District, 22101 New Taipei City, Taiwan
Tel: +886-2-2698-3929, Fax: +886-2-2698-3931
E-mail: service@tw.idec.com

IDEC IZUMI ASIA PTE. LTD.
No. 31, Tannery Lane #05-01,
HB Centre 2, Singapore 347788
Tel: +65-6746-1155, Fax: +65-6844-5995
E-mail: info@sg.idec.com

IDEC ASIA (THAILAND) CO.,LTD.
20th Fl., Sorachai Bldg., No.23/78,
Soi Sukhumvit 63, Sukhumvit Rd.,
Klongton-nua, Wattana, Bangkok 10110
Tel: +662-392-9765, Fax: +662-392-9768
E-mail: sales@th.idec.com